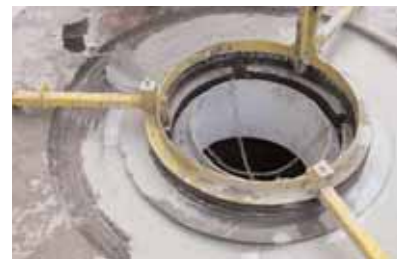


# PAGEL®

## SPEZIAL-BETON



## PRODUCT INFORMATION



PLEASE FIND THE LATEST LEAFLET ISSUES ON THE INTERNET AT  
[WWW.PAGEL.COM](http://WWW.PAGEL.COM)



# Modern production guarantees high quality



PAGEL® SPEZIAL-BETON GmbH & Co. KG, from Essen in Germany, has been definitive to the development of grout and other specialist mortars for over four decades now. PAGEL® GROUT SYSTEMS, which include the well-known V 1® series of grouts, and PAGEL® CONCRETE REPAIR SYSTEMS have long since established themselves as quality benchmarks across the world.

Pagel develops, produces and sells **special mortars and grout systems** for precision machines, wind turbines, anchor and injection work, **repair systems** for *concrete, drinking water reservoirs, sewer and waste water systems, and industrial floors*.

Our extensive product range, our products' consistent high quality and high level of reliability, coupled with our hands-on consulting services, are the foundation of the excellent international reputation we enjoy today. Our main concern always has and will be our customers' satisfaction.

As a result, PAGEL® SPEZIAL-BETON GmbH & Co. KG has been **EN ISO 9001**-certified since 1995. All of our products furthermore comply with the regulations and requirements for the CE mark and our internal production control is certified to **DIN EN 1504-3, DIN EN 1504-6** and **DIN EN 1504-7**.

PAGEL® products are produced in more than 10 different countries and sold in more than 50 countries globally through a number of Pagel subsidiaries and contractual partners.

*...we produce great grout  
- worldwide!*

# TABLE OF CONTENTS

GROUTS		Map / Data sheet <sup>*)</sup>	Side
<b>GROUT</b>			
V1/50°	grout, 0–5 mm	2 / 0201	4
V1*/160	flowable concrete, 0–16 mm	2 / 0203	4
V1*/10	grout, 0–1 mm	2 / 0202	4
<b>CONCRETE GROUT</b>			
V80 C45	concrete grout, 0–8 mm	2 / 0209	4
V160 C45	concrete grout, 0–16 mm	2 / 0209	4
<b>PRE-MIXED GROUT</b>			
V14	pre-mixed grout	2 / 0204	5
<b>BASALT GROUT</b>			
V15	basalt grout	2 / 0205	5
<b>STEEL FIBRE REINFORCED GROUT</b>			
V1A	steel fibre reinforced grout	4 / 0401	6
<b>STEEL FIBRE REINFORCED BASALT GROUT</b>			
V1A15	steel fibre reinforced basalt grout	4 / 0401	6
<b>SUPER HIGH STRENGTH GROUT</b>			
V1/30HF	super high strength grout	2 / 0214	7
V1/60HF	super high strength grout	2 / 0214	7
<b>QUICK-SETTING GROUT</b>			
V2	quick-setting grout	3 / 0301	7
<b>PRAPID SET GROUT</b>			
VB	rapid set grout	3 / 0302	8
<b>PRAPID SET GROUT - PLASTISIZE MOTAR</b>			
VB-P	rapid set grout – plastic consistency	3 / 0302	8
<b>TURBO GROUT</b>			
VT	turbo grout	3 / 0308	8
<b>TURBO GROUT - PLASTISIZE MOTAR</b>			
VT-P	turbo grout – plastic consistency	3 / 0308	8
<b>ANCHOR GROUT</b>			
E1	anchor grout, flowable	5 / 0502	9
E1S F	anchor grout, thixo consistency	5 / 0503	9
E1F	injection grout, high flowable	5 / 0503	9
<b>JOINT FILLER GROUT</b>			
FM10	joint filler grout, 0–1 mm	13 / 1305	9
<b>GROUT</b>			
VS*	grout, 0–5 mm	13 / 1303	10
<b>JOINT FILLER GROUT</b>			
VS*-P	joint filler grout, 0–2 mm	13 / 1304	10

## CONCRETE REPAIRING

<b>PCC-MORTAR</b>			
MSO2	corrosion protection/adhesion layer	10 / 1001	11
MS20°	PCC-mortar	6 / 0602	11
<b>PCC-I-MORTAR</b>			
MHO2	corrosion protection/adhesion layer	10 / 1004	11
MH20	PCC-I-mortar, 0–2 mm	6 / 0603	11
MH80	PCC-I-mortar, 0–8 mm	6 / 0603	11
<b>PCC-SCREEDING COMPOUND</b>			
MSO5	PCC-screeding compound	11 / 1101	12
<b>CONSTRUCTION-MORTAR</b>			
M3*	construction-mortar	6 / 0604	12
<b>SPCC-SPRAY-MORTAR</b>			
SP20	SPCC-spray-mortar, 0–2 mm	7 / 0701	12
SP40	SPCC-spray-mortar, 0–4 mm	7 / 0702	12
<b>SPCC-SPRAY-MORTAR</b>			
SP45	SPCC-spray-mortar	7 / 0703	13
<b>UNIVERSAL-MORTAR</b>			
U	universal-mortar	8 / 0803	13
<b>QUICK-REPAIR-MORTAR</b>			
R20	quick-repair-mortar	8 / 0802	14
<b>READY-FOR-USE-MORTAR DRINKING WATER AREA</b>			
TW	ready-for-use-mortar	9 / 0901	14
<b>CHANNEL-MORTAR</b>			
KA	channel-mortar	9 / 0801	15
<b>REPAIR GROUT</b>			
KA-S	repair grout	9 / 0810	15
<b>CHANNEL SLURRY</b>			
KA SLURRY	channel slurry	9 / 0815	15

CONCRETE PROTECTION		Map / Data sheet <sup>*)</sup>	Side
<b>CONCRETE PROTECTION SYSTEM</b>			
O2C	protection paint, (OS-C/OS-B)	12 / 1201	16
O2DE	protection coating, (OS-DII)	12 / 1202	16
O2A	hydrophobation, (OS-A/OS-B)	12 / 1205	17
<b>CEMENT-SLURRY</b>			
D1	pagelastac, (OS-DI)	12 / 1203	17

## INDUSTRIAL FLOOR

<b>STEEL-FIBRE SCREED</b>			
P3A	steel-fibre flooring	14 / 1404	18
<b>INDUSTRIAL FLOOR</b>			
P40	industrial floor	14 / 1411	18
<b>LEVELLING SCREED</b>			
FE20	levelling screed	14 / 1409	19
<b>INDUSTRIAL FLOORS - ADHESION LAYER</b>			
PH10	industrial floors - adhesion layer	14 / 1408	19

## RESINS

<b>PRIMER</b>			
EH1	epoxy resin / dry floor	15 / 1501	20
EH114	epoxy resin / low for temperatures	15 / 1502	20
EH115	epoxy resin / moist for subsoil	15 / 1503	20
<b>COATING</b>			
EH120	thin coating	15 / 1505	20
EH130	final coating	15 / 1511	20
<b>MORTAR</b>			
EH192	epoxy-resin mortar	15 / 1509	21
EH2	epoxy-resin boxing up mortar	15 / 1523	21
<b>EPOXY-GROUT</b>			
EH196R	epoxy-grout	15 / 1524	21

## CONSTRUCTION PRODUCTS

<b>CURING MEMBRANE</b>			
O1	curing membrane	16 / 1604	22
<b>QUICK-REPAIR MORTAR</b>			
B1	quick-repair mortar	16 / 1602	22
<b>CONSTRUCTION AND TILE ADHESIVE</b>			
R34	construction and tile adhesive	16 / 1601	22

<sup>\*)</sup> map-registry-no. / technical data-sheet no.

## APPENDIX

<b>PAGEL®-products with CE-marking</b>	23
<b>PAGEL®-concrete-repairing-system table</b>	24
<b>Your first step to PAGEL® - www.pagel.com</b>	25
<b>International addresses</b>	26

V1/50®

**PAGEL-GROUT\***

V1®/160

V1®/10

free flowing over 90 minutes  
non-shrink  
high early- and final strengths  
frost- and salt resistant  
oil-resistant  
chloride-free  
pumpable  
ready to use  
externally tested

machinery  
anchorings  
turbines  
bridge bearings  
potable water equipment  
concrete structures  
high storage areas  
pre-cast concrete parts  
rails  
industrial plants



	Grain size mm	Grouting height mm	Compressive strength N/mm <sup>2</sup>			Bending strength N/mm <sup>2</sup>			Expansion Vol. %	Consumption kg/m <sup>3</sup>
			1 d	7 d	28 d	1 d	7 d	28 d		
<b>V1®/50</b>	0 – 5	20 – 120	≥ 40	≥ 70	≥ 80	≥ 4	≥ 6	≥ 8	+ 0.5	2000
<b>V1®/160</b>	0 – 16	100 – 400	≥ 40	≥ 70	≥ 80	≥ 4	≥ 6	≥ 8	+ 0.5	2100
<b>V1®/10</b>	0 – 1	5 – 30	≥ 40	≥ 60	≥ 80	≥ 4	≥ 6	≥ 8	+ 0.5	2000

Classified in accordance with DafStb-Rili,

	Flowability class	Expansion class	Shrinkage	Early strength class	Compressive strength class
<b>V1®/50</b>	Categorisation	–	a <sub>3</sub>	SKVB II	A
<b>V1®/160</b>	Categorisation	–	a <sub>2</sub>	SKVB I	A
<b>V1®/10</b>	Categorisation	f <sub>2</sub>	–	SKVM II	A

**CONCRETE GROUT**

V80 C45

**PAGEL-CONCRETE GROUT\***

V160 C45

high flowability  
low development of warmth  
low elasticity module  
pumpable  
impervious to water and extensively resistant  
to oil  
ready to use  
controlled increasing of volume

columns and machines  
repairing-grout for prefabricated steel-concrete units and steel-concrete tubes  
supporting of buildings  
grouting of pockets  
noise prevention walls  
grouting of large volumes with at the same time control of the hydration temperatures



	Grain size mm	Grouting height mm	Compressive strength N/mm <sup>2</sup>			Bending strength N/mm <sup>2</sup>			Expansion Vol. %	Consumption kg/m <sup>3</sup>
			1 d	7 d	28 d	1 d	7 d	28 d		
<b>V80 C45</b>	0 – 8	60 – 200	≥ 15	≥ 40	≥ 60	≥ 1.5	≥ 3.5	≥ 5.0	+ 0.4	2100
<b>V160 C45</b>	0 – 16	80 – 400	≥ 15	≥ 40	≥ 60	≥ 1.5	≥ 3.5	≥ 5.0	+ 0.4	2000

Classified in accordance with DafStb-Rili,

	Flowability class	Expansion class	Shrinkage	Early strength class	Compressive strength class
<b>V80 C45</b>	Categorisation	–	a <sub>2</sub>	SKVB 0	C
<b>V160 C45</b>	Categorisation	–	a <sub>1</sub>	SKVB 0	C

**PAGEL-PRE-MIXED GROUT\***

plastic consistency  
non-shrinking  
high early- and final strengths

struts  
rail bearings  
bearings/Bridge bearings  
concrete repairs



V14/10

V14/40

V14/80

CE	Grain size mm	Grouting height mm	Compressive strength N/mm <sup>2</sup>			Bending strength N/mm <sup>2</sup>			Expansion Vol. %	Consumption kg/m <sup>3</sup>
			1 d	7 d	28 d	1 d	7 d	28 d		
<b>V14/10</b>	0 – 1	10 – 30	≥ 45	≥ 70	≥ 75	≥ 5	≥ 8	≥ 9	+ 0.5	2000
<b>V14/40</b>	0 – 4	10 – 70	≥ 45	≥ 70	≥ 75	≥ 5	≥ 8	≥ 9	+ 0.5	2000
<b>V14/80</b>	0 – 8	50 – 100	≥ 40	≥ 60	≥ 70	–	–	–	+ 0.5	2100

BASALT-GROUT

**PAGEL-BASALT-GROUT\***

heat resistant up to 400 °C  
(short duration)  
non-shrinking  
high early- and final strengths  
high abrasion resistance  
building material class A 1  
(not inflammable)

high-temperature area  
machinery  
anchorings  
steel struts



V15/30

V15/50

V15/80

	Grain size mm	Grouting height mm	Compressive strength N/mm <sup>2</sup>			Bending strength N/mm <sup>2</sup>			Expansion Vol. %	Consumption kg/m <sup>3</sup>
			1 d	7 d	28 d	1 d	7 d	28 d		
<b>V15/30</b>	0 – 3	30 – 50	≥ 40	≥ 60	≥ 75	≥ 5	≥ 7	≥ 8	+ 0.1	2000
<b>V15/50</b>	0 – 5	40 – 100	≥ 40	≥ 60	≥ 75	≥ 5	≥ 7	≥ 8	+ 0.1	2200
<b>V15/80</b>	0 – 8	50 – 120	≥ 40	≥ 60	≥ 75	≥ 5	≥ 7	≥ 8	+ 0.1	2200

CE\* Additives used in these products have an “EG-Conformity Explanation” according to § 9 “Building Product Law Authorization”. Thus the additives correspond to the regulations of the EN 934-2:2001-07.

V1A/40

**PAGEL-STEEL FIBRE REINFORCED GROUT\***

V1A/80

for heavy traffic  
steel fibre reinforced  
non-shrinking  
extremely high strengths  
good elasticity

heavy Duty Areas  
crane rails  
construction parts  
presses  
foundations



	Grain size mm	Grouting height mm	Compressive strength N/mm <sup>2</sup>			Bending strength N/mm <sup>2</sup>			Expansion Vol. %	Consumption kg/m <sup>3</sup>
			1 d	7 d	28 d	1 d	7 d	28 d		
<b>V1A/40</b>	0 – 4	40 – 70	≥ 40	≥ 70	≥ 80	≥ 6	≥ 7	≥ 10	+ 0.5	2000
<b>V1A/80</b>	0 – 8	60 – 200	≥ 40	≥ 70	≥ 80	–	–	–	+ 0.5	2100

STEEL FIBRE REINFORCED BASALT GROUT

V1A15/30

**PAGEL-STEEL FIBRE REINFORCED BASALT GROUT\***

V1A15/50

for heavy traffic  
steel fibre reinforced  
non-shrinking  
extremely high strengths  
good elasticity  
heat resistant up to 500 °C  
(short duration)

high-temperature areas  
heavy Duty Areas  
crane rails  
construction parts  
presses  
foundations



	Grain size mm	Grouting height mm	Compressive strength N/mm <sup>2</sup>			Bending strength N/mm <sup>2</sup>			Expansion Vol. %	Consumption kg/m <sup>3</sup>
			1 d	7 d	28 d	1 d	7 d	28 d		
<b>V1A15/30</b>	0 – 3	40 – 80	≥ 45	≥ 70	≥ 80	≥ 6	≥ 8	≥ 10	+ 0.5	2000
<b>V1A15/50</b>	0 – 5	60 – 120	≥ 45	≥ 70	≥ 80	≥ 6	≥ 8	≥ 10	+ 0.5	2200

**PAGEL-SUPER HIGH STRENGTH GROUT**

high early and final strengths  
highly fatigue resistance  
controlled and even expansion  
pumpable and easy to pour  
resistant to cracks even when having  
a low w/c-value  
oscillation-stabilizing

turbines, generators, compressors  
wind-powered devices joints  
grouting of joints and bearings  
rail support systems, Ribbed slabs  
and automatic warehouse supports



V 1/3OHF

V 1/6OHF

	Grain size mm	Grouting height mm	Compressive strength N/mm <sup>2</sup>			Bending strength N/mm <sup>2</sup>			Expansion Vol. %	Consumption kg/m <sup>3</sup>
			1 d	7 d	28 d	1 d	7 d	28 d		
<b>V1/3OHF</b>	0 – 3	30 – 300	≥ 70	≥ 90	≥ 130	–	–	–	+ 0.1	2300
<b>V1/6OHF</b>	0 – 6	40 – 400	≥ 70	≥ 90	≥ 115	–	–	–	+ 0.1	2300

Classified in accordance with DafStb-Rili,

	Flowability class	Expansion class	Shrinkage	Early strength class	Compressive strength class
<b>V1/3OHF</b>	Categorisation f <sub>1</sub>	–	SKVB 0	A	C100/115
<b>V1/6OHF</b>	Categorisation –	a <sub>2</sub>	SKVB 0	A	C100/115

**QUICK - SETTING GROUT****PAGEL-QUICK-SETTING GROUT**

load bearing after 2 hours (also at 5 °C)  
free flowing  
non-shrinking  
ready to use  
resistant to frost and dew salt  
pumpable

turbines  
anchoring, Fixatores  
machinery  
steel constructions  
bridge bearings  
rails  
struts



V 2/10

V 2/40

V 2/80

V 2/160

	Grain size mm	Grouting height mm	Compressive strength N/mm <sup>2</sup>				Bending strength N/mm <sup>2</sup>				Expansion Vol. %	Consumption kg/m <sup>3</sup>
			2 h	4 h	1 d	28 d	2 h	4 h	1 d	28 d		
<b>V2/10</b>	0 – 1	5 – 30	≥ 5	≥ 10	≥ 30	≥ 70	–	–	–	–	+ 0.4	2000
<b>V2/40</b>	0 – 4	20 – 100	≥ 5	≥ 10	≥ 25	≥ 70	–	–	–	–	+ 0.4	2000
<b>V2/80</b>	0 – 8	50 – 200	≥ 5	≥ 10	≥ 25	≥ 70	–	–	–	–	+ 0.4	2100
<b>V2/160</b>	0 – 16	100 – 400	≥ 5	≥ 10	≥ 40	≥ 70	–	–	–	–	+ 0.4	2100

Classified in accordance with DafStb-Rili,

	Flowability class	Expansion class	Shrinkage	Early strength class	Compressive strength class
<b>V2/10</b>	Categorisation f <sub>2</sub>	–	SKVM II	B	C55/67
<b>V2/40</b>	Categorisation f <sub>2</sub>	–	SKVM II	B	C55/67
<b>V2/80</b>	Categorisation –	a <sub>3</sub>	SKVB 0	B	C60/75
<b>V2/160</b>	Categorisation –	a <sub>2</sub>	SKVB 0	A	C60/75

VB10

**PAGEL-RAPID SET GROUT**

VB40

load bearing after 30 minutes (20 °C)  
extremely high early strength  
flowable and usable for boxing up  
non-shrink  
water resistant  
resistant to frost and dew salt

manhole cover grouting  
drain covers  
pipe channels  
installation works  
columns and prefabricated members



CE	Grain size mm	Grouting height mm	Compressive strength N/mm <sup>2</sup>				Bending strength N/mm <sup>2</sup>				Application time min (20°C)	Consumption kg/m <sup>3</sup>
			0,5 h	1 h	1 d	28 d	0,5 h	1 h	1 d	28 d		
<b>VB10</b>	0 – 1	10 – 50	≥ 5	≥ 8	≥ 35	≥ 60	–	–	–	–	app. 10	1900
<b>VB40</b>	0 – 4	30 – 60	≥ 5	≥ 8	≥ 35	≥ 60	–	–	–	–	app. 10	1900

VB-P10

**PAGEL-RAPID SET GROUT - PLASTIC CONSISTENCY**

extremely fast setting mortar  
plastic consistency  
is ready for load-bearing within as little as 30 minutes (20 °C)  
water impermeable  
frost and road-salt resistant

installation of manhole rings  
shaft repairing  
repair work inside channels



<b>VB-P10</b>	0 – 1	10 – 50	≥ 5	≥ 8	≥ 35	≥ 55	–	–	–	–	app. 8	1800
---------------	-------	---------	-----	-----	------	------	---	---	---	---	--------	------

TURBO GROUT

VT05

**PAGEL-TURBO GROUT**

VT10

extremely fast setting grout  
is ready for load-bearing within as little as 30 minutes  
high flowability  
non-shrink  
water-impermeable  
frost and road-salt resistant

sewer and shaft rehabilitation  
for sealing domestic installations  
grouting access hatches, slide valves and flaps  
grouting of signalling systems used in traffic infrastructure  
grouting of feedthroughs for industrial and domestic gas and water installations



	Grain size mm	Grouting height mm	Compressive strength N/mm <sup>2</sup>				Bending strength N/mm <sup>2</sup>				Application time min (20°C)	Consumption kg/m <sup>3</sup>
			0,5 h	1 h	1 d	28 d	0,5 h	1 h	1 d	28 d		
<b>VT05</b>	0 – 0.5	10 – 30	≥ 5	≥ 8	≥ 25	≥ 55	≥ 2	≥ 2	≥ 4	≥ 8	app. 5	1900
<b>VT10</b>	0 – 1	10 – 50	≥ 5	≥ 8	≥ 45	≥ 70	≥ 2	≥ 2	≥ 5	≥ 8	app. 1 – 3	1900

VT-P10

**PAGEL-TURBO GROUT - PLASTIC CONSISTENCY**

extremely fast setting mortar  
plastic consistency  
is ready for load-bearing within as little as 10 minutes (20 °C)  
water impermeable  
frost and road-salt resistant

installation of manhole rings  
shaft repairing



<b>VT-P10</b>	0 – 1.0	10 – 50	≥ 5	≥ 6	≥ 35	≥ 55	≥ 2	≥ 2	≥ 4	≥ 8	app. 3	1900
---------------	---------	---------	-----	-----	------	------	-----	-----	-----	-----	--------	------



**PAGEL-ANCHOR GROUT**

E1

pumpable and injectable  
free flowing  
non-shrinking  
high adhesive strength  
mining approvals

mining and tunnel construction  
stabilization of subsoil  
filling of joints and cavities



E1SF

**E1:** workable at 30 °C 60 min.  
**E1SF:** plastic consistency

CE	Grain size mm	Compressive strength N/mm <sup>2</sup>			Bending strength N/mm <sup>2</sup>			Expansion Vol. %	Consumption kg/m <sup>3</sup>
		1 d	7 d	28 d	1 d	7 d	28 d		
<b>E1*</b>	0 – 0,5	≥ 40	≥ 55	≥ 65	≥ 5	≥ 6	≥ 7	+ 0,3	1600
<b>E1SF*</b>	0 – 0,5	≥ 15	≥ 40	≥ 50	≥ 4	≥ 6	≥ 7	+ 0,3	1800

INJECTION GROUT

**PAGEL-INJECTION GROUT**

E1F

<b>E1F*</b>	< 0.125	≥ 30	≥ 45	≥ 60	≥ 4	≥ 6	≥ 7	+ 0,5	1500
-------------	---------	------	------	------	-----	-----	-----	-------	------

JOINT FILLER GROUT

**PAGEL-JOINT FILLER GROUT**

FM10

develops high early and final strengths  
water-impermeable  
pumpable  
frost and deicing-salt resistant  
certified to fire protection class A1 as specified by EN 13501 and DIN 4102

for filling the joints between precast reinforced concrete part with and without all types of joint profile and wire rope loop connecting elements for filling building joints, groves and hollow spaces  
for injecting into and filling overhead anchor holes



	Grain size mm	Amount of water %	Compressive strength N/mm <sup>2</sup>			Bending strength N/mm <sup>2</sup>			Expansion Vol. %	Consumption kg/m <sup>3</sup>
			1 d	7 d	28 d	1 d	7 d	28 d		
<b>FM10</b>	0 – 1	14	≥ 20	≥ 50	≥ 65	≥ 4	≥ 6	≥ 8	+ 0.4	1900

VS®

**PAGEL-GROUT**

high flowability for at least 90 minutes  
easy to pour  
controlled expansion with a rigid bond  
low development of warmth  
low modulus of elasticity  
frost and deicing-salt resistant  
certified to fire protection class A1 as specified by EN 13501 and DIN 4102

rigid joint grouting to connect concrete parts with PFEIFER-VS® **BOX system elements**  
grouting of tensile- and transverse-force stressed and strained prefabricated joints in connection with PFEIFER VS® **BOX**  
grouting of connections with:  
PFEIFER **column base system**  
PFEIFER **wall shoe system**



U CE	Grain size mm	Grouting height mm	Compressive strength N/mm <sup>2</sup>				Bending strength N/mm <sup>2</sup>				Expansion Vol. %	Consumption kg/m <sup>3</sup>
			1 d	7 d	28 d	90 d	1 d	7 d	28 d	90 d		
VS®	0 – 5	20 – 120	≥ 40	≥ 70	≥ 80	≥ 90	≥ 4	≥ 6	≥ 8	≥ 10	+ 0.5	2000

Approved under the building authority's regulations within the scope of PFEIFER-VS®-Rail Systems:  
PFEIFER-VS®-ISI-system<sup>®</sup> approval number: Z-21.8-1929  
PFEIFER-VS®-BZ-system<sup>®</sup> approval number: Z-21.8-1792  
PFEIFER-VS®-plus-box approval number: Z-21.8-1839  
PFEIFER-VS®-slim-box approval number: Z-21.8-1875

Classified in accordance with DafStb-Rili,					
	Flowability/Expansion class	Shrinkage	Early strength class	Compressive strength class	
VS®	Categorisation a3	SKVB II	A	C60/75	

## JOINT FILLER GROUT

VS®-P

**PAGEL-JOINT FILLER GROUT**

non-shrinking joint filler grout, with a gel-like consistency  
pumpable  
develops high early and final strengths  
water-impermeable  
frost and deicing-salt resistant  
certified to fire protection class A1 as specified by EN 13501 and DIN 4102

joint filler grout used in the building authority approved PFEIFER-VS®-Rail Systems **BZ250** and **TZ100** for filling vertical and horizontal joints between prefabricated reinforced concrete parts  
for filling building joints, groves and hollow spaces



U CE	Grain size mm	Grouting height mm	Compressive strength N/mm <sup>2</sup>			Bending strength N/mm <sup>2</sup>			Expansion Vol. %	Consumption kg/m <sup>3</sup>
			1 d	7 d	28 d	1 d	7 d	28 d		
VS®-P	0 – 2	10 – 40	≥ 40	≥ 60	≥ 70	≥ 4	≥ 7	≥ 10	+ 0.3	2000

Approved under the building authority's regulations within the scope of PFEIFER-VS®-Rail Systems:  
PFEIFER-VS®-Rail Systems ISI approval number: Z-21.8-1929  
PFEIFER-VS®-Rail Systems BZ approval number: Z-21.8-1792

Classified in accordance with DafStb-Rili,					
	Consistency	Shrinkage	Early strength class	Compressive strength class	
VS®-P	Categorisation gel-like	SKVM II	A	C55/67	

**PAGEL-PCC-MORTAR**

concrete-replacement-system according to ZTV-ING, ZTV-W easy to use suitable for processing on vertical and over-the-head-surfaces single component, sprayable vapor diffusionable reduces the penetration of CO<sub>2</sub> and moisture  
**MSO2:** corrosion protection and adhesion layer

wall and ceiling areas and over-head work tunnels bridges facades parapets reprofiling ZTV-ING-Application: PCC II ZTV-W LB291 listed stress and strain classification according to DAfStb-RiLi-SIB: M2



MSO2  
 MS 20®

	Grain size mm	Layer thickness mm	Compressive strength N/mm <sup>2</sup>			Bending strength N/mm <sup>2</sup>			Consumption kg/m <sup>3</sup>
			1 d	7 d	28 d	1 d	7 d	28 d	
<b>MSO2</b>	–	–	–	–	–	–	–	–	1850
<b>MS 20®</b>	0 – 2	6 – 40	≥ 20	≥ 45	≥ 55	≥ 4	≥ 6	≥ 8	2000

PCC-I-MORTAR

**PAGEL-PCC-I-MORTAR**

concrete-replacement-system according to ZTV-ING, ZTV-W easy to use, plastic-strengthened highly suitable for use on horizontal substrates ready to use, single component resistant to frost and dew salt applicable and loadable under dynamic stress  
**MHO2:** Corrosion protection and adhesion layer

leveling course for bridges, tunnels and car parks (underlinings and coatings) concrete coatings, concrete floor surfaces, leveling of gradients repairs of outbreaks ZTV ING application: PCC I ZTV W LB291 listed stress and strain classification according to DAfStb-RiLi-SIB: M2



MHO2  
 MH20  
 MH80

	Grain size mm	Layer thickness mm	Compressive strength N/mm <sup>2</sup>			Bending strength N/mm <sup>2</sup>			Adhesive strength N/mm <sup>2</sup>	Consumption kg/m <sup>3</sup>
			1 d	7 d	28 d	1 d	7 d	28 d		
<b>MHO2</b>	–	–	–	–	–	–	–	–	≥ 1.5	1850
<b>MH20</b>	0 – 2	6 – 40	–	≥ 35	≥ 55	–	≥ 6	≥ 8	≥ 2.0	2000
<b>MH80</b>	0 – 8	> 30	–	≥ 35	≥ 55	–	≥ 6	≥ 8	≥ 2.0	2000

Nearly all types of grouts are also available with **cements of classes CEM III/A or CEM I HS/NA (free of C<sub>3</sub>A)**, - however, the technical data may vary according to cement type.

MS05

**PAGEL-PCC-SCREEDING COMPOUND**

screeing compound areas (ZTV-ING; OS-C; OS-DII), very high stability and adhesive, single component, universally applicable, plastic-strengthened and ready for use, sprayable, vapor diffusible, resistant to frost and dew salt

Repair of pores, holes, cracks, floor and wall irregularities; Substrates for surface protection coatings; Equalising of concrete maintenance work; Coating of finished parts, masonry and concrete surfaces; Filling of pipe slits



	Grain size mm	Layer thickness mm	Compressive strength N/mm <sup>2</sup>			Bending strength N/mm <sup>2</sup>			Adhesive strength N/mm <sup>2</sup>	Consumption kg/m <sup>3</sup>
			1 d	7 d	28 d	1 d	7 d	28 d		
<b>MS05</b>	0 – 0.5	1.5 – 6	≥ 15	≥ 35	≥ 45	≥ 3	≥ 6	≥ 8	≥ 1.5	2000

CONSTRUCTION - MORTAR

M3®

**PAGEL-CONSTRUCTION-MORTAR**

concrete-Replacement-System according to PCC (DAfStb-Repair guideline), high carbonating resistance high bond performance hardening under dynamic stress and strain  
**MS02:** corrosion protection and adhesion layer

demand class M3  
struts  
plates  
bars  
wall and floor surfaces



	Grain size mm	Layer thickness mm	Compressive strength N/mm <sup>2</sup>			Bending strength N/mm <sup>2</sup>			Adhesive strength N/mm <sup>2</sup>	Consumption kg/m <sup>3</sup>
			1 d	7 d	28 d	1 d	7 d	28 d		
<b>M3®</b>	0 – 2	5 – 40	≥ 20	≥ 45	≥ 55	≥ 4	≥ 6	≥ 8	≥ 2.0	2000

SPCC-SPRAY-MORTAR

SP20

**PAGEL-SPCC-SPRAY-MORTAR**

SP40

SPCC-Spraying areas according to ZTV-ING, ZTV-W suitable for both wet and dry spraying techniques tested with different spraying systems, single component, resistant to frost and dew salt, vapor diffusible,  
**MS02:** corrosion protection

bridges  
tunnels  
concrete containers  
wall- and seiling surfaces  
facades  
struts  
beams  
waterway constructions



	Grain size mm	Layer thickness* mm	Compressive strength N/mm <sup>2</sup>			Bending strength N/mm <sup>2</sup>			Adhesive strength N/mm <sup>2</sup>	Consumption kg/m <sup>3</sup>
			1 d	7 d	28 d	1 d	7 d	28 d		
<b>SP20</b>	0 – 2	up to 50/80	≥ 20	≥ 40	≥ 50	≥ 4	≥ 6	≥ 8	≥ 2.0	2000
<b>SP40</b>	0 – 4	up to 100/150	≥ 20	≥ 45	≥ 60	≥ 4	≥ 6	≥ 8	≥ 2.0	2000

\* wet spraying method (multiple layers)/dry spraying method (multiple layers)

**PAGEL-SPCC-SPRAY-MORTAR**

SP45

cementitious, hydraulic SPCC spray mortar for wet spraying application systems  
chloride free  
extremely stable  
resistant to frost and dew salt  
water-impermeable

repairing of concrete and reinforced concrete buildings with low compressive strengths  
repair of hydraulic structures in the area of responsibility of the *Bundesamt für Wasserbau*  
reservoirs, weirs, ship hoists, quay walls



CE	Grain size mm	Layer thickness mm	E-modul (static) N/mm <sup>2</sup>			Compressive strength N/mm <sup>2</sup>	Application time min (20 °C)	Consumption kg/m <sup>3</sup>
			28 d	28 d	28 d			
<b>SP45</b>	0 – 4	20 – 60	< 25,000	≥ 25		≥ 45	2000	

UNIVERSAL-MORTAR

**PAGEL-UNIVERSAL-MORTAR**

U02

areas of concrete replacement  
free of polymers, single component  
resistant to frost and dew salt  
building material class A1 (not inflammable)  
sprayable  
fire protection mortar

wall and floor surface  
industrial floor  
store and ramp areas  
joints



U05

U10

U20

U40

U80

U160

CE	Grain size mm	Layer thickness mm	Compressive strength N/mm <sup>2</sup>			Bending strength N/mm <sup>2</sup>			Adhesive strength N/mm <sup>2</sup>	Consumption kg/m <sup>3</sup>
			1 d	7 d	28 d	1 d	7 d	28 d		
<b>U02</b>	0 – 0,2	0.5 – 3	≥ 15	≥ 40	≥ 50	≥ 4	≥ 6	≥ 7	≥ 1.5	1900
<b>U05</b>	0 – 0,5	2 – 6	≥ 15	≥ 35	≥ 50	≥ 3	≥ 5	≥ 7	≥ 1.5	1900
<b>U10</b>	0 – 1	5 – 20	≥ 20	≥ 50	≥ 60	≥ 3	≥ 6	≥ 7	≥ 2	1800
<b>U20</b>	0 – 2	10 – 30	≥ 20	≥ 40	≥ 50	≥ 3	≥ 6	≥ 7	≥ 2	1900
<b>U40</b>	0 – 4	10 – 40	≥ 25	≥ 50	≥ 65	≥ 4	≥ 6	≥ 8	≥ 2	1900
<b>U80</b>	0 – 8	30 – 80	≥ 20	≥ 45	≥ 55	–	–	–	≥ 2	1900
<b>U160</b>	0 – 16	≥ 50	≥ 35	≥ 50	≥ 60	–	–	–	≥ 2	2150

Nearly all types of grouts are also available with cements of classes CEM III/A or CEM I HS/NA (free of C<sub>3</sub>A),- however, the technical data may vary according to cement type.

R20/02

**PAGEL-QUICK-REPAIR-MORTAR**

R20/05

areas of quick repair  
load bearing after 2 hours  
(even at 5 °C)  
good adhesion  
chloride free  
easy application

concrete and mortar surfaces  
self-leveling floors  
stairs  
industrial floors



R20/10

R20/20

R20/40

R20/80

CE	Grain size mm	Layer thickness mm	Compressive strength N/mm <sup>2</sup>				Adhesive strength N/mm <sup>2</sup>	Consumption kg/m <sup>3</sup>
			2 h	1 d	7 d	28 d		
<b>R20/02</b>	0 – 0.2	0,5 – 5	≥ 5	≥ 15	≥ 30	≥ 50	≥ 2	1900
<b>R20/05</b>	0 – 0.5	2 – 6	≥ 5	≥ 20	≥ 40	≥ 50	≥ 2	1800
<b>R20/10</b>	0 – 1	3 – 20	≥ 5	≥ 20	≥ 40	≥ 55	≥ 2	1900
<b>R20/20</b>	0 – 2	5 – 40	≥ 5	≥ 25	≥ 40	≥ 55	≥ 2	2000
<b>R20/40</b>	0 – 4	20 – 50	≥ 5	≥ 25	≥ 45	≥ 55	≥ 2	2000
<b>R20/80</b>	0 – 8	30 – 100	≥ 5	≥ 25	≥ 40	≥ 55	≥ 2	2000

READY-FOR-USE-MORTAR

TW05

**PAGEL-READY-FOR-USE-MORTAR - DRINKING WATER AREA**

TW10

areas for drinking water  
fulfilled „Drinking water recommendation“ (KTW)  
corresponds to DVGW W270 and W347  
resistant to frost and dew salt  
sprayable  
water impermeable

drinking water areas  
wall and floor surface of tanks, canals,  
dams  
waterpipes  
sewage plants



TW20

TW40

TW05 (white)

TW10 (white)

TW20 (white)

TW40 (white)

DVGW W300 W270 W347	CE	Grain size mm	Layer thickness mm	Compressive strength N/mm <sup>2</sup>			Adhesive strength N/mm <sup>2</sup>	Consumption kg/m <sup>3</sup>
				1 d	7 d	28 d		
<b>TW05</b>		0 – 0.5	2 – 6	≥ 15	≥ 35	≥ 45	≥ 1.5	1700
<b>TW10</b>		0 – 1	5 – 10	≥ 25	≥ 45	≥ 55	≥ 2	1800
<b>TW20</b>		0 – 2	10 – 30	≥ 25	≥ 45	≥ 55	≥ 2	1850
<b>TW40</b>		0 – 4	20 – 40	≥ 25	≥ 45	≥ 60	≥ 2	1850
<b>TW05 (white)</b>		0 – 0.5	2 – 6	≥ 15	≥ 30	≥ 40	≥ 1.5	1700
<b>TW10 (white)</b>		0 – 1	5 – 10	≥ 20	≥ 40	≥ 50	≥ 2	1800
<b>TW20 (white)</b>		0 – 2	10 – 30	≥ 20	≥ 35	≥ 45	≥ 2	1850
<b>TW40 (white)</b>		0 – 4	20 – 40	≥ 25	≥ 35	≥ 45	≥ 2	1900

**PAGEL-CHANNEL-MORTAR**

KA 20

channel and waste water range  
 high resistance against strong  
 chemical attack  
 resistant to sulfate attack (industry) and  
 ammonium attack (agriculture)  
 sprayable  
 plastic-strengthened  
 water impermeable

channel pipes  
 sewage plants  
 waste water collecting tank



CE	Grain size mm	Layer thickness mm	Compressive strength N/mm <sup>2</sup>			Bending strength N/mm <sup>2</sup>			Adhesive strength N/mm <sup>2</sup>	Consumption kg/m <sup>3</sup>
			1 d	7 d	28 d	1 d	7 d	28 d		
<b>KA20</b>	0 – 2	6 – 40	≥ 20	≥ 40	≥ 55	≥ 4	≥ 7	≥ 9	≥ 2	1900

REPAIR GROUT

**PAGEL-REPAIR GROUT**

KA -S

rapid set repair grout  
 suitable for all kinds of fast repairs,  
 filling and sealing  
 easy to use - requires only water  
 resilient within a short period of time  
 impermeable to water  
 workability approx. 30 sec. (20 °C)

sealing rigid cracks  
 temporary sealing cracks that leaks  
 water  
 assembly and installation grout



	Grain size mm	Layer thickness mm	Compressive strength N/mm <sup>2</sup>			Bending strength N/mm <sup>2</sup>			Application time min (20 °C)	Consumption kg/l
			1 d	7 d	28 d	1 d	7 d	28 d		
<b>KA-S</b>	0 – 0.5	≤ 20	≥ 30	≥ 50	≥ 60	–	–	–	app. 0.5	1.75

CHANNEL SLURRY

**PAGEL-CHANNEL SLURRY**

KA Slurry

perfectly bonds to load-bearing  
 concrete and brick substrates  
 certified to fire protection class A1 as  
 specified by EN 13501 and DIN 4102  
 impermeable to water and largely  
 resistant to oils and fuels  
 suitable for manual and machine  
 application

waste water collectors  
 sewage well  
 channel and waste water drainage  
 systems  
 process water reservoirs  
 keeps out non-pressing water  
 (internal and external)



	Grain size mm	Layer thickness mm	Compressive strength N/mm <sup>2</sup>			Bending strength N/mm <sup>2</sup>			Consumption kg/dm <sup>3</sup>
			1 d	7 d	28 d	1 d	7 d	28 d	
<b>KA Slurry</b>	0 – 0.5	2 – 6	≥ 25	≥ 40	≥ 50	≥ 5	≥ 6	≥ 7	1.8

Nearly all types of grouts are also available with **cements of classes CEM III/A or CEM I HS/NA (free of C<sub>3</sub>A)**, - however, the technical data may vary according to cement type.


O2C

**PAGEL-PROTECTION PAINT**

according to OS-C-/OS-B- and/or OS-4/OS-2  
 applicable to moist-damp or dry surfaces  
 short waiting periods  
 vapor diffusable  
 free of solvents  
 different RAL-colours

bridges  
 concrete facades  
 curing agent  
 tunnels  
 dams  
 container



	Appli- cations number	Layer thickness mm	Adhesive- strength N/mm <sup>2</sup>	Application temperatur °C	Application time min.	Consumption (1 application) kg/m <sup>2</sup>
<b>O2C</b>	2	0.12 – 0.36	≥ 1.3	+8 – +40	unlimited	0.24 – 0.29

PROTECTION COATING


O2DE

**PAGEL-PROTECTION COATING**

according to OS-DII- bzw. OS-5A  
 crack bridging (even at -20 °C)  
 high elasticity  
 vapor diffusable  
 free of solvents  
 different RAL-colours

bridges  
 concrete and mortar surfaces  
 tunnels  
 areas of fine cracks



	Appli- cations number	Layer thickness mm	Adhesive- strength N/mm <sup>2</sup>	Application temperatur °C	Application time min.	Consumption (1 application) kg/m <sup>2</sup>
<b>O2DE</b>	3	0.33 – 2.66	≥ 1.3	+8 – +40	unlimited	0.34 – 0.37




**PAGEL-HYDROPHOBATION**

O2A

impregnation  
 according to OS-A-/OS-B and/or  
 OS-1/OS-2  
 cream like, solvent-free, alkali-steadily  
 ready for use  
 high penetration depth  
 prevents surface protection coatings  
 from getting damp underneath  
 unique application  
 small consumption

concrete and cement mortar surfaces  
 façades  
 bridges



	Appli- cations number	Layer thickness mm	Adhesive- strength N/mm <sup>2</sup>	Application temperatur °C	Application time min.	Consumption kg/m <sup>2</sup>
<b>O2A</b>	1	-	-	+5 - +30	unlimited	0,2 - 0,4

CEMENT-SLURRY


**PAGELASTIC**

D1

according to OS-DI- bzw. OS-5B  
 high elasticity  
 crack bridging (even at -20 °C)  
 vapor diffusable  
 two-components  
 water impermeable

bridges  
 concrete and mortar surfaces  
 tunnels  
 areas of fine cracks  
 balconies, terraces, bathrooms  
 below tiles and all water retaining  
 structures



	Appli- cations number	Layer thickness mm	Adhesive- strength N/mm <sup>2</sup>	Application temperatur °C	Application time min.	Consumption (1 application) kg/m <sup>2</sup>
<b>D1</b>	2	2	≥ 0.8	+8 - +30	app. 120	2.5 - 2.7

P3A

**PAGEL-STEEL-FIBRE FLOORING**

P3A/15

though elasticity  
ready for use  
shock and wear resistant  
**P3A/15:** basalt aggregate, heat proof, shortterm up to 500°C

rolling and steel plants  
tank workshops  
industrial halls  
high temperature areas (**P3A/15**)



CE	Grain size mm	Layer thickness mm	Compressive strength N/mm <sup>2</sup>			Bending strength N/mm <sup>2</sup>			Consumption kg/m <sup>2</sup>
			1 d	7 d	28 d	1 d	7 d	28 d	
<b>P3A</b>	0 – 8	20 – 80	≥ 45	≥ 70	≥ 80	–	–	–	2200
<b>P3A/15</b>	0 – 5	20 – 80	≥ 50	≥ 75	≥ 85	≥ 6	≥ 9	≥ 11	2500

INDUSTRIAL FLOOR

P40

**PAGEL-INDUSTRIAL FLOOR**

P80

ready for use industrial floor  
certified to fire protection class A1  
hard aggregate class A (DIN 1100)  
highly wear resistant  
easy to apply and cost-effective  
specified for stress group: Medium (DIN 18560, 7)

industrial floors  
ramps  
warehouses, hangars  
indoor car parking areas  
repair workshops



CE	Grain size mm	Layer thickness mm	Compressive strength N/mm <sup>2</sup>			Bending strength N/mm <sup>2</sup>			Consumption kg/m <sup>3</sup>
			1 d	7 d	28 d	1 d	7 d	28 d	
<b>P40</b>	0 – 4	10 – 40	≥ 50	≥ 70	≥ 90	≥ 5	≥ 10	≥ 14	2300
<b>P80</b>	0 – 8	30 – 80	≥ 50	≥ 70	≥ 90	≥ 5	≥ 10	≥ 14	2300

**PAGEL-LEVELLING SCREED**

FE20

cement-bound self levelling floor based on portland cement, high tightness interior and external area, high flowability can be walked on after 3 hours impervious to water

composite screed for industrial floors and balance layers, screed linings for living and industrial-buildings garages, parkingplaces and balconies terraces, cellar soils



CE	Grain size mm	Layer thickness mm	Compressive strength N/mm <sup>2</sup>			Bending strength N/mm <sup>2</sup>			Consumption kg/m <sup>3</sup>
			1 d	7 d	28 d	1 d	7 d	28 d	
<b>FE20</b>	0 – 2.0	5 – 20	≥ 25	≥ 45	≥ 55	≥ 4	≥ 6	≥ 8	1800

INDUSTRIAL FLOOR / ADHESION LAYER

**PAGEL-INDUSTRIAL FLOORS - ADHESION LAYER**

PH10

PH15

for mineral industrial soil coatings low water cement value serves in addition as corrosion protection  
**PH15:** basalt addition layer

bonding layer for: industrial soil coatings industrial floorings concrete undergrounds



	Grain size mm	Layer thickness mm	Compressive strength N/mm <sup>2</sup>			Bending strength N/mm <sup>2</sup>			Abrasion cm <sup>3</sup> 50 cm <sup>2</sup>	Consumption kg/m <sup>2</sup>
			1 d	7 d	28 d	1 d	7 d	28 d		
<b>PH10</b>	0 – 1	–	–	–	–	–	–	–	2.2	2 – 4
<b>PH15</b>	0 – 2	–	–	–	–	–	–	–	2.4	2 – 4

EH1

**PAGEL-EPOXY - RESIN**

EH114

EH115

priming  
sealing  
solidification  
adhesion layer  
cover sealing

**EH1**  
low viscosity  
high penetration  
multi purpose unit

dry surface

**EH114**  
fast setting  
reacting from +5 °C

low temperatures

**EH115**  
high bonding on moist  
subsoil

moist subsoil



CE	Appli- cation number	Layer thickness mm	Compo- nents	Application temperatur °C	Application time min.	Consump- tion g/m <sup>2</sup>
<b>EH1</b>	1	-	2	+10 - +30	app. 45	250 - 800
<b>EH114</b>	1	-	2	+5 - +20	app. 20	250 - 800
<b>EH115</b>	1	-	2	+10 - +30	app. 45	250 - 800

COATING

EH120

**PAGEL-EPOXY - COATING**

EH130

solvent-free  
high density  
self leveling  
weather-proof  
abrasion resistant  
water-friendly

**EH120 THIN COATING**  
epoxy based  
self leveling, high build coating  
pigmented, with aggregate

**EH130 FINAL COATING**  
final resin coating  
coating for concrete and screed underground  
pigmented, without aggregate



CE	Appli- cation number	Layer thickness mm	Compo- nents	Application temperatur °C	Application time min.	Consump- tion kg/m <sup>2</sup>
<b>EH120</b>	1	1 - 5	2	+10 - +30	app. 35 - 40	app. 1,65
<b>EH130</b>	1	-	2	+10 - +30	app. 45	0,35 - 0,8

**PAGEL-EPOXY - MORTAR/GROUT**

easy to use  
 abrasion resistant  
 water impermeable  
 three-components  
 (resin/hardener/sand)

**EH2 BOXING UP MORTAR**  
 struts  
 bridge bearing  
 pigmented

**EH192 MORTAR**  
 industrial hall, storage halls, garages,  
 repair places, transparent

**EH196R**  
 grout  
 rail plate, galvanized steel components and  
 non-iron-metals, precisionbearings



EH2

EH192

EH196R

CE	Appli- cation number	Layer thickness mm	Compo- nents	Application temperatur °C	Application time min.	Consump- tion kg/l
<b>EH2</b>	1	3 – 40	3	+10 – +30	app. 30	app. 2.0
<b>EH192</b>	1	3 – 50	3	+10 – +30	app. 30	app. 2.0
CE	Grain size mm	Compo- nents	Grouting height mm	Compressive strength N/mm <sup>2</sup>	Bending strength N/mm <sup>2</sup>	Consump- tion kg/m <sup>3</sup>
				5 h 1 d 10 d	5 h 1 d 10 d	
<b>EH196R</b>	0.5	2	6 – 50	≥70 ≥100 ≥110	≥10 ≥30 ≥40	1800

O1

**PAGEL-CURING MEMBRANE**

protects surfaces against premature water evaporation  
provides for slower draining of the concrete, screed and mortar,  
forms water vapour-close film  
prevents crack formation

concrete and mortar surfaces  
cement of screeds  
concrete blocks and finished units  
dams and heavy structures



	Appli- cation number	Layer thickness mm	Barrier- coefficient %	Application temperatur °C	Application time min.	Consump- tion g/m <sup>2</sup>
<b>O1</b>	1	-	85	+5 - +30	-	100-150

QUICK-REPAIR MORTAR

B1

**PAGEL-QUICK-REPAIR MORTAR**

areas of installation  
easy to use  
quick setting  
load bearing  
ready for use  
waterproof

fillings of e.g. anchorages  
repair of water break-throughs  
filling of holes  
sealings  
assembly  
filler for plugholes



	Grain size mm	Layer thickness mm	Compressive strength N/mm <sup>2</sup>				Bending strength N/mm <sup>2</sup>			Adhesive strength N/mm <sup>2</sup>	Consump- tion kg/dm <sup>3</sup>
			1 h	2 h	1 d	7 d	1 d	7 d	28 d		
<b>B1</b>	-	-	≥2.5	≥5	≥30	≥40	-	-	-	-	-

CONSTRUCTION AND TILE ADHESIVE

R34

**PAGEL-CONSTRUCTION AND TILE ADHESIVE**

high bond strength and good flexibility  
multi-purpose use  
water- / frost resistant

wall and floor areas  
solid foam  
isolation- and protection covering



is supplemented with the following products: R 34 white

<b>CE</b>	Appli- cation number	Layer thickness mm	Adhesive strength N/mm <sup>2</sup>	Application temperatur °C	Application time min.	Consump- tion kg/m <sup>2</sup>
<b>R34</b>	1	1 - 3	≥1.5	+5 - +30	app. 45	2.0

# PAGEL-PRODUCTS WITH CE-MARKING

Products	CE-Conformity	
	EN	Class
<b>GROUT</b>		
V 1/50	1504-6	-
V 1/160	1504-6	-
V 1/10	1504-6	-
V 2/10	1504-6	-
V 2/40	1504-6	-
V 2/80	1504-6	-
V 2/160	1504-6	-
V 14/10	1504-6	-
V 14/40	1504-6	-
V 14/80	1504-6	-
E 1	1504-6	-
E 1 F	1504-6	-
VB 10	1504-6	-
VB 40	1504-6	-
V 1/30HF	1504-6	-
V 1/60HF	1504-6	-

<b>CONCRETE REPAIRING</b>		
MH02	1504-7	-
MH20	1504-3	R4
MH80	1504-3	R4
MS02	1504-7	-
MS05	1504-3	R3
MS20	1504-3	R4
SP20	1504-3	R4
SP40	1504-3	R4
M3	1504-3	R4
U02	1504-3	R3
U05	1504-3	R3
U10	1504-3	R4
	13813	CT-C60-F10-A9
U20	13813	CT-C50-F7-A9
U40	1504-3	R4
	13813	CT-C60-F10-A9
U80	1504-3	R4
	13813	CT-C50-F7-A9
U160	1504-3	R4
	13813	CT-C60-F7-A9
R20/O2	1504-3	R3
R20/O5	1504-3	R3
R20/10	1504-3	R4
	13813	CT-C60-F10-A12
R20/20	1504-3	R4
	13813	CT-C60-F10-A12
R20/40	1504-3	R4
	13813	CT-C60-F10-A9
R20/80	1504-3	R4
	13813	CT-C60-F7-A9
R20/160	13813	CT-C60-F7-A9
TW05	1504-3	R3
TW10	1504-3	R4
	13813	CT-C60-F10-A9
TW20	1504-3	R4
	13813	CT-C50-F7-A9
TW40	1504-3	R4
	13813	CT-C60-F10-A9
KA20	1504-3	R4

Products	CE-Conformity	
	EN	Class
<b>CONCRETE PROTECTION</b>		
O2A	1504-2	Hydrophobation
O2C	1504-2	Coating
O2DE	1504-2	Coating
D1	1504-2	Coating

<b>INDUSTRIAL FLOOR</b>		
P3A	13813	CT-C80-F10-A9
FE20	13813	CT-C50-F7-A15
P40	13813	CT-C80-F10-A9
P80	13813	CT-C80-F10-A9

<b>CONSTRUCTION PRODUCTS</b>		
R34	12004	C1 TE

<b>RESINS</b>		
EH1	13813	SR-AR1-B1,5-IR4
EH114	13813	SR-B1,5
EH115	13813	SR-AR1-B1,5-IR4
EH120	13813	SR-AR1-B1,5-IR4
EH130	13813	SR-AR1-B1,5-IR4
EH192	13813	SR-AR1-B1,5-IR4
EH2	13813	SR-AR1-B1,5-IR4
EH196R	13813	SR-AR1-B1,5-IR4

- DIN EN 1504 = Products and systems for protection and repair of concrete supporting structures
- DIN EN 1504-3:2005 = Mortar for statically and non-statically relevant repairs
- DIN EN 1504-6:2006 = Product for the anchoring of reinforced bars
- DIN EN 13813 = Properties and requirements on screed (cement-based and epoxy-coatings)
- DIN EN 12004 = Mortars and adhesives for tiles and plates: definitions and specifications
- DIN V 18026 = Surface protection / coating product for concrete from products according DIN EN 1504-2:2005-1


# PAGEL CONCRETE REPAIR SYSTEMS

ZTV-ING PART 3, chapter 4 (SIB) / DAfStb - guideline - SIB / DIN V 18026 / EN 1504 Part 2 and 3

## PCC/SPCC-MORTAR-SYSTEMS

Appli- cation	System application and product name	Test- certificate no.	Agreement- certifikat no.	Expiry- date	
<b>PCC I</b>	MHO2 CORROSION PROTECTION AND ADHESION LAYER	MKB MHB	P-BAM 7.1/25202/8-2	01/2188-1-50-V2	31.03.16
	MH20 PCC-I-MORTAR	WM			
	MHO2 CORROSION PROTECTION AND ADHESION LAYER	MKB MHB	P 2141 / 01-110	01/2141/01-110-93-V2	17.09.15
	MH80 PCC-I-MORTAR	WM			
<b>PCC I/II</b>	MSO2 CORROSION PROTECTION AND ADHESION LAYER	MKB MHB	P-BAM VII. 1/25203/6-2	00/2188 - 45 - V2	09.09.18
	MS20 PCC-MORTAR	WM			
	MSO5 PCC-SCREEDING COMPOUND	FS			
	MSO2 CORROSION PROTECTION AND ADHESION LAYER	MKB MHB	P 2334 / 02-159	03/2334/02159-145-V2	18.12.17
<b>SPCC</b>	M3 KONSTRUKTIONSMORTAR	WM			
	<b>WET- and DRY-spraying</b>				
	MSO2 CORROSION PROTECTION AND ADHESION LAYER	MKB MHB	P 2255/00-91	00/2255/00-91-67-V2	03.09.15
	SP20 SPCC-MORTAR	WM			
<b>DRY-spraying</b>					
	MSO2 CORROSION PROTECTION AND ADHESION LAYER	MKB MHB	P 2551/01-130	01/2551/01-130-122-V2	09.12.16
	SP40 SPCC-MORTAR	WM			

## CONCRETE PROTECTION-SYSTEM

Appli- cation-	System application and product name	specifications for comple- tion according DIN V 18026	EG-Declaration of Conformity 
<b>OS-1</b>	O2A HYDROPHOBATION	H fulfilled	fulfilled
<b>OS-2</b>	O2A HYDROPHOBATION	H fulfilled	fulfilled
	O2C PROTECTION PAINT	OS fulfilled	fulfilled
<b>OS-4</b>	MSO5 PCC-SCREEDING COMPOUND	FS fulfilled	fulfilled
	O2C PROTECTION PAINT	OS fulfilled	fulfilled
<b>OS-4</b>	MSO5 PCC-SCREEDING COMPOUND	FS fulfilled	fulfilled
	O2DE PROTECTION COATING	OS fulfilled	fulfilled
<b>OS-5b</b>	D1 PAGELASTIC	OS fulfilled	fulfilled



Your first step to PAGEL®

[www.pagel.com](http://www.pagel.com)



Here you can inform yourself online and up-to-date technical information and news concerning PAGEL®.

Also you can find technical data sheets, test certificates, permissions, invitations of tenders and safety data sheets of our products which are downloadable in digital form.

In addition you find your next PAGEL® store as well as the agent responsible for you.

For general questions or for support regarding concrete projects please do not hesitate to contact us or one of our field representatives.



# INTERNATIONALES ADDRESSES

## AUSTRALIA

Danterr PTY LTD  
3 Sedgemoor Court  
Warrnambool  
Victoria  
**AUSTRALIA 3280**  
Fon.: +61 1800 262 383  
Fax: +61 (3) 5561 5499  
eMail: sales@danterr.com  
Internet: www.pagel.com.au

## BRAZIL

Comercial Antonio Carvalho  
Rua Alemanha, 1204  
Camilópolis - Santo André - SP  
CEP 09240-001  
**BRAZIL**  
Fon.: +55 11 4996-9010  
eMail: contato@cacarvalho.com.br  
Internet: www.cacarvalho.com.br

## CROATIA

PSB SPECIJALNI BETON d.o.o.  
Adamičeva 3  
**10020 ZAGREB**  
Mobil: +385 91 3023902  
Tel: +385 1 5590411  
Fax: +385 1 5606180  
eMail: pagel.info@gmail.com

## FINLAND

ALIMEX OY  
Huvilakatu 12  
**FIN-04400 JÄRVENPÄÄ**  
Fon.: +358 9 2922350  
Fax: +358 9 2916006  
Mobil: +358 40 5000987  
eMail: myynti@alimex.fi

## HUNGARY

EXTRACEM Kft.  
Damjanich u. 26  
**H-2832 HÉREG**  
Fon.: +36 34 372671  
Fax: +36 34 372671

## IRELAND

Contech Accessories Limited  
Lough Feilim Industrial Estate  
Carlow Road  
**IRL-TULLOW, COUNTY CARLOW**  
Fon.: +353 59 9151350  
Fax: +353 59 9152793  
eMail: sales@contech-accessories.ie  
Internet: www.contech-accessories.ie

## JAPAN

PAGEL NIPPON CO. LTD.  
Matsushit Bldg. 3 F  
2-12-13 Shinkawa, Chuo-Ku  
**J-100 TOKYO**  
Fon.: +81 3 35535264  
Fax: +81 3 35535984  
eMail: pagel-nippon@mwe.biglobe.ne.jp  
Internet: www.b-info.jp/pagel-nippon/

## AUSTRIA

Penta Bautechnik GmbH  
Jaidhof 30  
**A-3542 JAIDHOF**  
Fon.: +43 2716 93044-11  
Fax: +43 2716 93044-21  
eMail: vertrieb@penta-bau.at  
Internet: www.penta-bau.at

## BULGARIA

BORIS BORISSOV - TERRA  
Stara Planina 9  
**BG-5890 VALCHITRAN**  
okr. Plevenski  
Fon.: +420 608 219280  
eMail: terra3d@abv.bg  
eMail: terra2@seznam.cz  
Internet: www.terrabulgarien.com

## DENMARK

MB Projekt ApS  
Mølledamsvej 12  
**DK-3460 BIRKERØD**  
Fon.: +45 45820318  
Fax: +45 45820518  
eMail: info@mbprojekt.dk  
Internet: www.mbprojekt.dk

## FRANCE

PAGEL SAS  
Espace Cristal  
22, rue Gustave Eiffel, BP10058  
**F-78306 POISSY CEDEX**  
Fon.: +33 1 39223900  
Fax: +33 1 39224039  
Mobil: +33 6 12821911  
eMail: info@pagel.fr  
Internet: www.pagel.fr

## INDIA

Pidilite Industries Limited  
Ramakrishna Mandir Road,  
Kondivita, Andheri- East  
**IND-Mumbai 400059**  
Fon.: +91 22 2835 7000  
Fax: +91 22 2835 7008  
Mobil: +91 845 1802485  
eMail: sujit.chandra@pidilite.com  
Internet: www.pidilite.com

## ISRAEL

SEALTEC CONSTRUCTION CO. LTD  
1 Bareket St.  
**IL-37807 BEIT HANANYA**  
Fon.: +04 6100333  
Fax: +04 6101510  
Mobil: +050 5210364  
eMail: sealtec@netvision.net.il  
Internet: www.sealtec.co.il

## KOREA (REPUBLIC)

IZIN CORPORATION CO.  
#302 Hee mang BLDG,  
1207-5, GAEP0-DONG, KANGNAM-GU,  
**ROK-SEOUL**  
Fon.: +82 2 5734893  
Fax: +82 2 5734894  
Mobil: +82 11 3893364  
eMail: izin0325@naver.com

## BELGIUM

REWAH N.V  
Nijverheidsweg 24  
**B-2240 ZANDHOVEN**  
Fon.: +32 3 4751414  
Fax: +32 3 4751094  
eMail: info@rewah.com  
Internet: www.rewah.com

## CHINA

Beijing OuHuaLian Science & Technology Ltd  
(BOST)  
Room 1308, 2# Building, LongQi Plaza,  
Huangping Road Changping District,  
**102200 BEIJING P.R. CHINA**  
Fon.: +86 10 82920623/24  
Fax: +86 10 82927921  
eMail: pagel\_china@ouhualian.com  
Internet: www.pagel.com.cn

## ESTONIA

Baby Holding OY  
Peeter Erg  
Ülase 8-10  
**EST-75501 SAKU HARJUMAA**  
Fon.: +372 53 583696  
eMail: info@betoniplast.eu  
Internet: www.betoniplast.eu

## GERMANY

PAGEL SPEZIAL-BETON GmbH & Co. KG  
Wolfsbankring 9  
**D-45355 ESSEN**  
Fon.: +49 201 68504-0  
Fax: +49 201 68504-31  
eMail: info@pagel.com  
Internet: www.pagel.com

## IRAN

PAGEL IRAN ARSHIA ORANG CO.  
No.20, 5th St., North Falamak Ave.  
Shahrak Gharb  
**IR-ZIP 1467885484-TEHRAN**  
Fon.: +98 21 88370130  
Fax: +98 21 88075715  
eMail: info@arshiaorang.com  
Internet: www.arshiaorang.com

## ITALIA

PAGEL ITALIA  
Gaetano Lombardo  
Via G. Murari Bra' 49/c  
**IT-37136 VERONA**  
Fon.: +39 3450 117540  
eMail: info@pagel.it  
Internet: www.pagel.it

## LATVIA

SIA "OK BUVMATERIALI"  
Piedrujas iela 3d  
**LV-1073 RIGA**  
Fon.: +371 673 65636  
Fax: +371 673 65626  
eMail: okbuv@okbuv.lv  
Internet: www.okbuv.lv

# INTERNATIONALES ADRESSES



## LITHUANIA

UAB MOSAS  
Birželio 23-iosios g. 5  
LT-03206 VILNIUS  
Fon.: +370 5 2610179  
Fax: +370 5 2608355  
eMail: vytautas@mosas.lt  
Internet: www.mosas.lt



## NORWAY

PAGEL INDUSTRIMØRTEL A/S  
Postboks 135  
N-1751 HALDEN  
Fon.: +47 69 192514  
Fax: +47 69 191840  
Mobil: +47 95 107110  
eMail: larssen@pagel.no



## POLAND

PAGEL POLSKA  
ul. Lipowa 7, Komorniki  
PL-55-300 ŚRODA ŚLĄSKA  
w. dolnośląskie  
Fon.: +48 71 3172806  
Fax: +48 71 3176136  
Mobil: +48 601 701877  
eMail: info@pagel.pl  
Internet: www.pagel.pl



## PORTUGAL

BIU INTERNACIONAL  
Consultoria e Comércio, Lda.  
Rua Gil Vicente, N° 4  
P-2615 ALVERCA  
Fon.: +351 21 9578888  
Fax: +351 21 9578890  
eMail: info@biu.pt  
Internet: www.biu.pt



## QATAR

CIKO Middle East  
"C" Ring Road  
Q-DOHA  
Fon.: +974 44114787  
Fax: +974 44114792  
eMail: enquires@cikome.com  
Internet: www.cikome.com



## CZECH REPUBLIC

HIC & SERVICES S.R.O.  
Teplárenská 611/1  
CZ-10800 PRAHA 10  
Fon.: +420 2 72702112  
Fax: +420 2 72702123  
eMail: hic@hic.cz  
Internet: www.hic.cz



## ROMANIA

PAGEL ROMANIA S.R.L.  
Str. G-ral. Candiano Popescu Nr. 63A  
Ap.1 Sector 4  
RO-040581 BUCUREȘTI  
Fon.: +40 21 3206859  
Fax: +40 21 3224254  
eMail: office@pagel.ro  
Internet: www.pagel.ro



## RUSSIA

ZAO"ASOKA"  
Frunsenkaja nab. 30, bld. 28  
RUS-119146 MOSKAU  
Fon.: +7 495 7816070  
Fax: +7 495 7816070  
eMail: pagel@asoka.ru  
Internet: www.asoka.ru



## SLOVAKIA

ALLMEDIA s.r.o.  
Pod gaštanmi 4  
SK-821 07 BRATISLAVA  
Fon.: +421 2 62310920  
Fax: +421 2 62413041  
eMail: allmedia@allmedia.sk  
Internet: www.allmedia.sk



## SOUTH AFRIKA

Megapascal Contracting Technologies  
123 New Road, Grand Central  
ZA-1685 MIDRAND  
Fon.: +27 11 8050683  
Fax: +27 11 8052020  
Mobil: +27 829069701  
eMail: megapascal@mweb.co.za



## SPAIN

YA YA MATERIALES, S.L.U.  
Camino de La Era, 16  
E-38750 EL PASO  
Fon.: +34 922 485450  
Fax: +34 922 486205  
eMail: info@yaya.es  
Internet: www.yaya.es



## SRI LANKA

CONCRETE CHEMICAL PRODUCTS  
Ralf Karpinski - General Manager  
73, Pepliyana Road  
LK-NUGEGODA  
Fon.: 0094 114303218  
0094 112812916  
Cell: 0094 777714411  
Fax: 0094 114304890  
eMail: concreteralf@eureka.lk



## SWEDEN

PAGEL SPECIALBRUK  
Postadress EURO SPECIALBRUK  
Fredsgatan 18  
S-43243 VARBERG  
Fon.: +46 340 675258  
Fax: +46 340 675257  
Mobil: +46 705 738743  
eMail: johansson@pagel.se  
Internet: www.pagel.se



## SWITZERLAND

Rolloplan AG/SA  
Feldmattstrasse 23  
Postfach 323  
CH-6032 EMMEN  
Fon.: +41 41 2602074  
Fax: +41 41 2602075  
Mobil: +41 79 3532074



## TAIWAN

TAIWAN POLIMAX CO., LTD.  
11F, No. 257  
Wen Tsz Rd., Tzuo Ying District,  
ROC-KAOHSIUNG CITY, TAIWAN  
Fon.: +886 734 38910  
Fax: +886 734 30476  
Mobil: +886 933 324207  
eMail: bat1001@ms32.hinet.net



## THE NETHERLANDS

VERWAARD HANDELSONDERNEMING B.V.  
Postbus 478  
NL-2740 AL Waddinxveen  
Fon.: +31 88 5401100  
Fax: +31 88 5401199  
Mobil: +31 6 20091680  
eMail: info@verwaard-bv.nl  
Internet: www.verwaard-bv.nl



## UKRAINE

KNP  
ul. Naukova, 7-A/303  
UA-LWOW, 79060  
Fon.: +38 322 244685  
Fax: +38 322 244683  
eMail: knp-mr@mail.lviv.ua



## UNITED KINGDOM

PES (UK) LIMITED  
Unit 1, Watling Close  
Sketchley Meadows Business Park  
GB-HINCKLEY, LEICESTERSHIRE,  
LE10 3EZ  
Fon.: +44 1455 251251  
Fax: +44 1455 251252  
eMail: sales@pesukltd.com  
Internet: www.pesukltd.com



## USA

PAGEL-USA Inc.  
4282 Shoreline Drive  
USA-SPRING PARK,  
MINNESOTA 55384  
Fon.: +1 952 9426105  
Fax: +1 952 9426108  
eMail: sales@pagel-usa.com  
Internet: www.pagel-usa.com



# PAGEL®

## SPEZIAL-BETON GMBH & CO.KG

WOLFSBANKRING 9 · 45355 ESSEN · GERMANY  
TEL. +49 201 68504-0 · FAX +49 201 68504-31  
INTERNET WWW.PAGEL.COM · E-MAIL INFO@PAGEL.COM



The information provided in this leaflet, is supplied by our consulting service and is the end result of exhaustive research work and extensive experience.

They are, however, without liability on our part, in particular with regard to third parties proprietary rights, and do not relieve the user of the responsibility for verifying that the products and processes are suitable for the intended application.

The data presented was derived from tests under normal climate conditions according to DIN 50014 and mean average values and analysis.

Deviations are possible when delivery takes place.

Given that recommendations may differ from those shown in this leaflet written confirmation should be sought. It is the responsibility of the purchaser to ensure they have the latest leaflet issue and that its contents are current.

Our customer service staff will be glad to provide assistance at any time.

We appreciate the interest you have shown in our products.

This technical data sheet supercedes previously issued information.

Please find the latest leaflet issues at [www.pagel.com](http://www.pagel.com).