



PLASMACEM

NATURAL LOOKING BEAUTIFUL CONCRETE

Form Liners by **PLASMACEM**



Natural looking beautiful concrete

PLASMACEM was founded in Vicenza in 2006, based on the experience gained in working with scenery elements for major amusement parks, with the aim of creating low-environmental-impact formwork systems.

This aim was achieved with the production of form liners manufactured under our exclusive patent, both for use on construction sites and for creating pre-cast elements.

The different types of material used to create the form liners allow for between 3 and 100 reuses; in addition, our research and development department studies and tests increasingly cutting-edge materials, specifically formulated for each type of application, in order to provide and ensure a quality **customized product** for constructors and pre-casters. PLASMACEM is also able to produce **large form liners** for concrete works of architectural significance, without unpleasant interruption joints.

ESSEFLEX

form liners for large panels



Code: ESX

- form liners in material derived from silicon at noble catalysis (FLEXIBLE).
- 100 reuses.
- no size limit.
- can be used without fixing.
- magnetic anchoring possible on pre-cast benches.
- form liners also suitable for columns. (see page 37).

FLEX

form liner for pre-casting



Code: FLX

- form liners in sintered polyurethane (FLEXIBLE).
- 50 - 100 reuses.
- can be used without fixing.
- magnetic anchoring possible on pre-cast benches.
- form liners also suitable for columns (see page 37).

STONECLEAR

form liner for casting in situ



Code: STR - SVM

- form liners in cyclic density polyurethane, fortified by synthetic resins.
- 3 - 100 reuses.
- fixing to formworks with glue or screws.
- fixing to plastic formworks with magnets.
- improved pull-out assembly.

mano®

self-bearing form liner



Code: MANO

- shaped panel for casting with high-density polyurethane fortified by resins.
- shaped panel with SOFT sintered polyurethane for high section finishes and with undercuts.
- 100 or more reuses.
- available in four standard finishes, as well as in several customized finishes.
- also suitable for climbing systems.

Form liners for architectural concrete by PLASMACEM

Using form liners for architectural concrete allows you to:

- Create patterns on exposed concrete walls.
- Adapt buildings to meet all aesthetic needs.
- Obtain even surfaces in a simple and cost-effective manner, thanks to the play of light and shadow that can be generated.

Application range

- Building and civil engineering.
- Precast concrete.
- Cast in place concrete.

The most important parameters to bear in mind are:

- The precise number of form liners to assemble.
- The design to comply with (continuous mounting or positioning of joints).
- Dimensions adapted to the formwork to be used.
- Type of form liner suited to the number of expected reuses and the field of use.

For casting in situ, the form liners can be secured to the formwork in three ways:

- with glue applied to a clean, grease-free formwork.
- mechanically, using screws (8\10 screws\m2).
- with magnets (for plastic formworks).

For pre-casting, the form liners can be secured in two ways:

- with glue.
- with magnets .
- **It is also possible to use the form liners without securing them to the metal benches.**

To achieve the best results, we recommend that you:

- Use class S4 concrete and a suitable superplasticizer.
- Use a concrete recipe suitable for exposed surfaces.
- Store in a dry place protected against direct exposure to frost, sun, and rain.

The form liners by Plasmacem are delivered to size taking into account the information on construction site requirements.
The dimensions of the products delivered are guaranteed with a tolerance of $\pm 0.5\%$.
The concrete release must take place within 24 hours of the casting.

Legend of the pictograms



Form liner joining on 4 sides | Form liner joining top/bottom | Form liner joining right/left | Form liner that cannot be joined

This warning has been provided based on the results of on-site tests. This information does not constitute a guarantee by us. Therefore, preliminary tests should be conducted in order to check whether the application conditions have been complied with. Users requiring clarification or information are welcome to contact our technical office for assistance. These specifications may be changed without notice.

0302 Prun



Str\0302 - Prun	Dimensions L. 1.000 x H. 2.000 mm
Flx\0302 - Prun	Dimensions L. 1.000 x H. 3.000 mm
Esx\0302 - Prun	Dimensions on demand

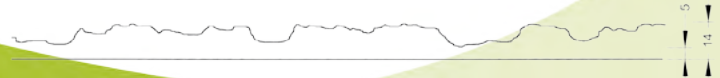


0402 Rough

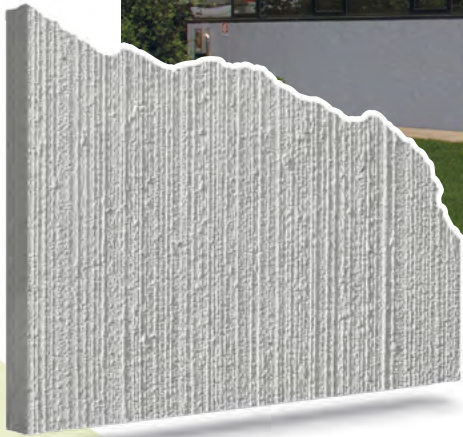


Str\0402 - Rough
Flx\0402 - Rough
Esx\0402 - Rough

Dimensions L. 1.000 x H. 2.000 mm
Dimensions L. 1.000 x H. 3.000 mm
Dimensions on demand



0407 Graffiato



F1x\0407 - Graffiato
Esx\0407 - Graffiato

Dimensions L. 945 x H. 1.950 mm
Dimensions on demand



0406 Travertino

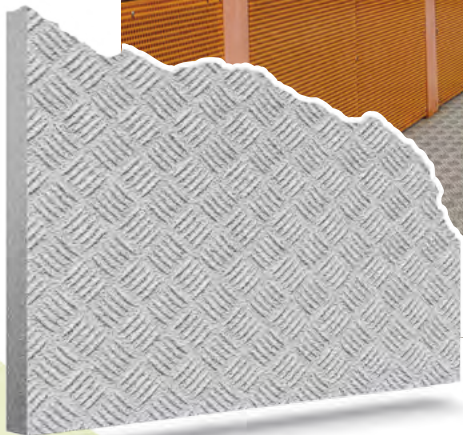


Str\0406 - Travertino
Flx\0406 - Travertino
Esx\0406 - Travertino

Dimensions L. 1.000 x H. 2.000 mm
Dimensions L. 1.000 x H. 3.000 mm
Dimensions on demand



0110 Floorgrip



Str\0110 - Floorgrip
Flx\0110 - Floorgrip
Esx\0110 - Floorgrip

Dimensions L. 1.000 x H. 2.000 mm
Dimensions L. 1.000 x H. 3.000 mm
Dimensions on demand



0301 Woodline



Str\0301 - Woodline
Flx\0301 - Woodline
Esx\0301 - Woodline

Dimensions L. 1.000 x H. 1.000 mm
Dimensions L. 3.000 x H. 1.000 mm
Dimensions on demand



0403 Linear



Str\0403 - Linear
Flx\0403 - Linear
Esx\0403 - Linear

Dimensions L. 500 x H. 2.000 mm
Dimensions L. 500 x H. 3.000 mm
Dimensions on demand



0404 Linear 2



Str\0404 - Linear 2
Flx\0404 - Linear 2
Esx\0404 - Linear 2

Dimensions L. 500 x H. 2.000 mm
Dimensions L. 500 x H. 3.000 mm
Dimensions on demand

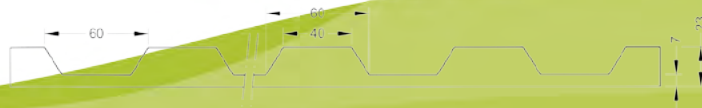


0303 Grecata



Str\0303 - Grecata
Flx\0303 - Grecata
Esx\0303 - Grecata

Dimensions L. 500 x H. 2.000 mm
Dimensions L. 500 x H. 3.000 mm
Dimensions on demand

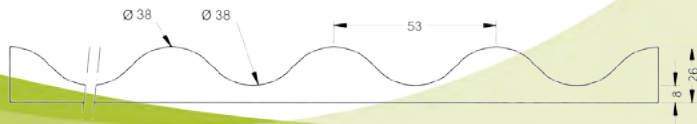


0210 Ondulato

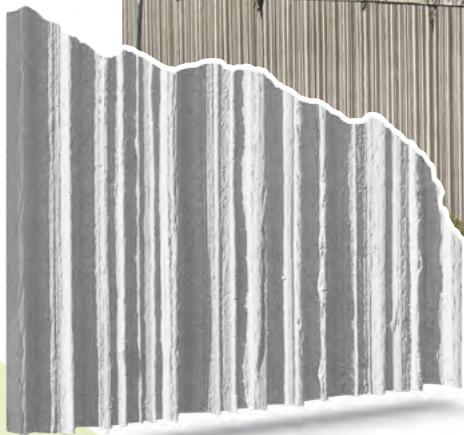


Str\0210 - Ondulato
Flx\0210 - Ondulato
Esx\0210 - Ondulato

Dimensions L. 530 x H. 2.000 mm
Dimensions L. 530 x H. 3.000 mm
Dimensions on demand



0606 Cannulato

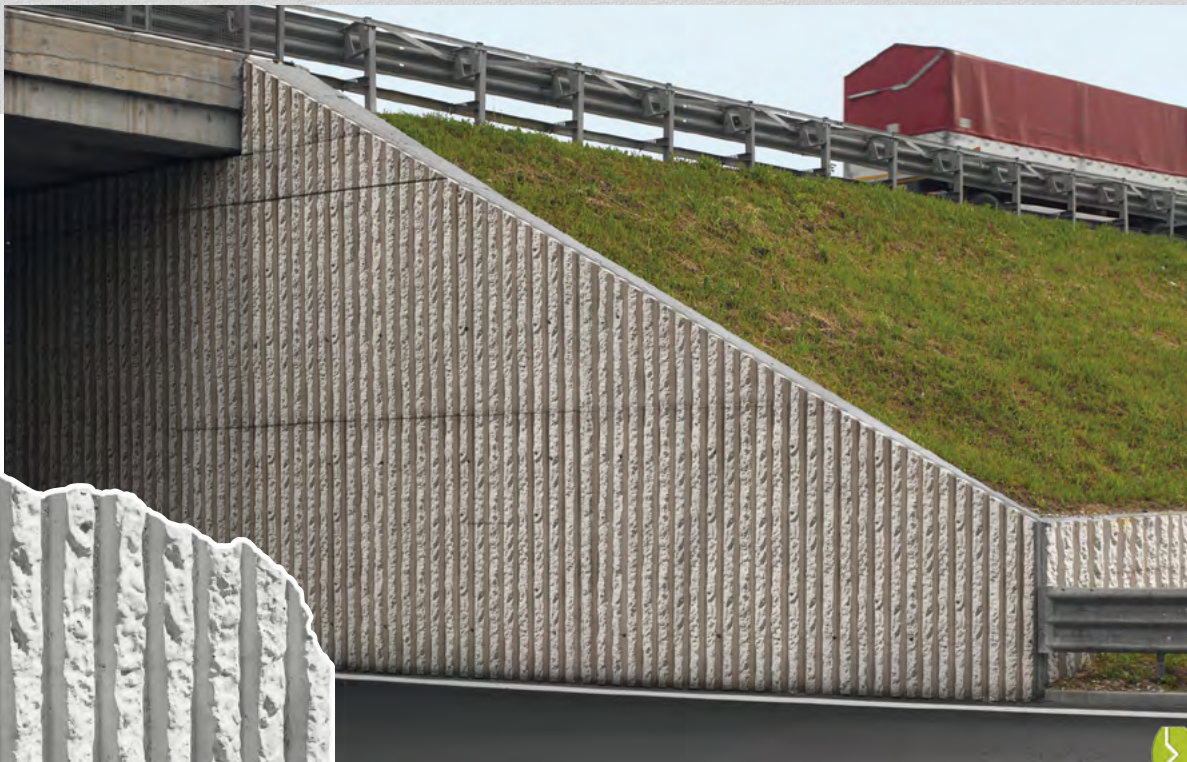


Str\0606 - Cannulato
Fix\0606 - Cannulato
Esx\0606 - Cannulato

Dimensions L. 500 x H. 2.000 mm
Dimensions L. 500 x H. 3.000 mm
Dimensions on demand

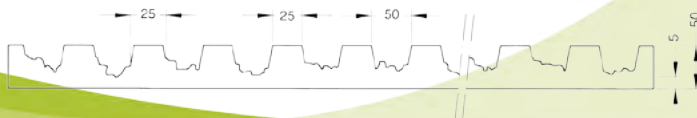


0209 Rigato

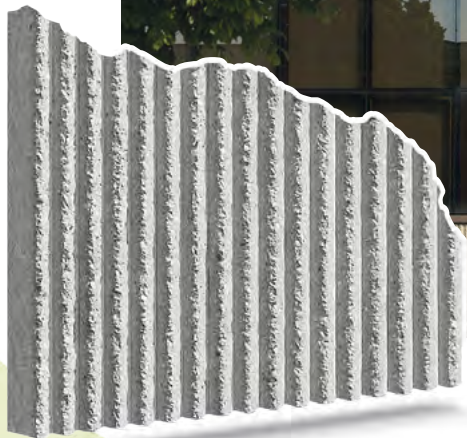


Flx\0209 - Rigato
Esx\0209 - Rigato

Dimensions L. 510 x H. 3.000 mm
Dimensions on demand

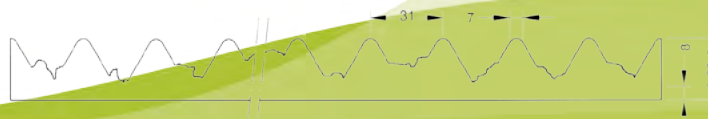


0209a Rigatino



Flx\0209a - Rigatino
Esx\0209a - Rigatino

Dimensions L. 620 x H. 3.000 mm
Dimensions on demand

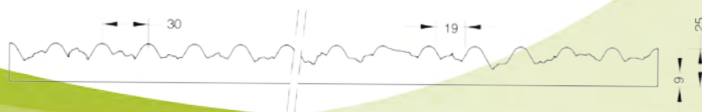


1301 Rigatello



Str\1301 - Rigatello
Flx\1301 - Rigatello
Esx\1301 - Rigatello

Dimensions L. 965 x H. 1.250 mm
Dimensions L. 610 x H. 3.000 mm
Dimensions on demand



0710 Rollgrip



Str\0710 - Rollgrip
Flx\0710 - Rollgrip
Esx\0710 - Rollgrip

Dimensions L. 600 x H. 1.200 mm
Dimensions L. 600 x H. 3.000 mm
Dimensions on demand



0405 Pietraglia



Str\0405 - Pietraglia
Flx\0405 - Pietraglia
Esx\0405 - Pietraglia

Dimensions L. 1.000 x H. 2.000 mm
Dimensions L. 1.000 x H. 3.000 mm
Dimensions on demand



0211 Adda

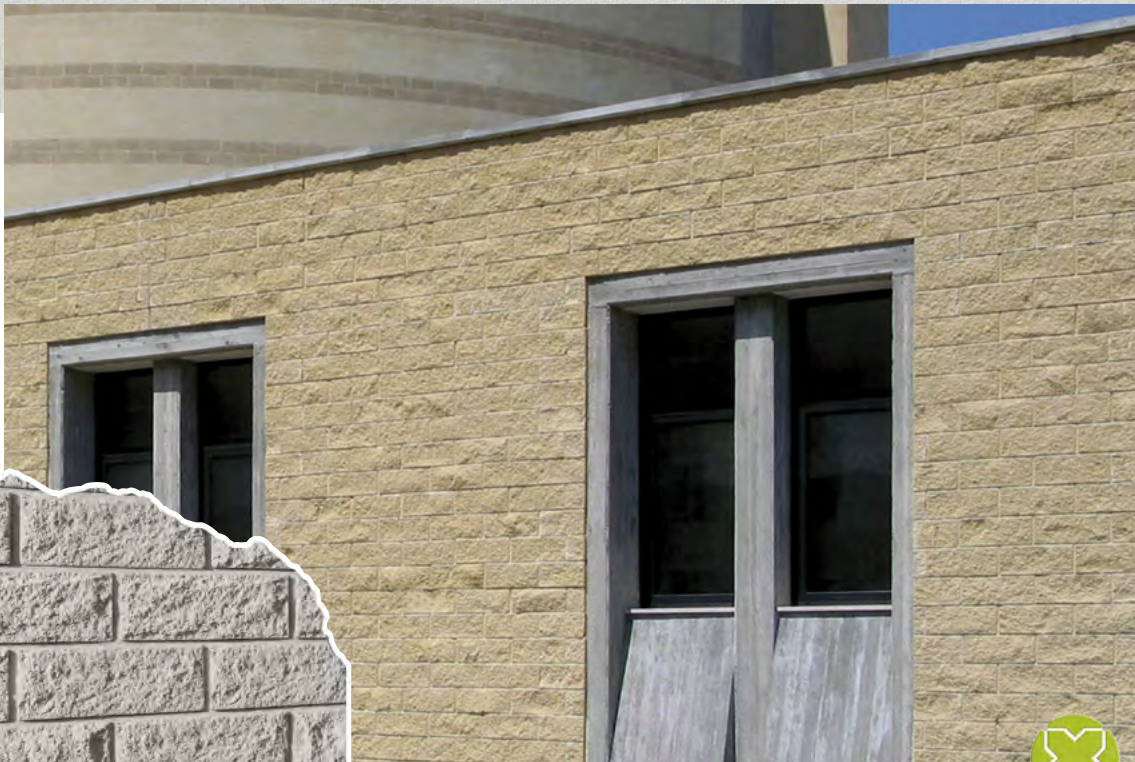


Str\0211 - Adda
Flx\0211 - Adda
Esx\0211 - Adda

Dimensions L. 1.000 x H. 1.000 mm
Dimensions L. 3.000 x H. 1.000 mm
Dimensions on demand

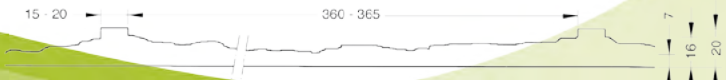


0509 Blockstone



Str\0509 - Blockstone
Flx\0509 - Blockstone
Esx\0509 - Blockstone

Dimensions L. 1.000 x H. 1.000 mm
Dimensions L. 3.000 x H. 1.000 mm
Dimensions on demand

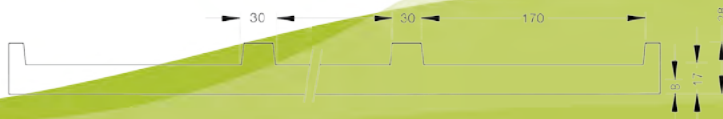


0304 Qubik



Str\0304 - Qubik
Flx\0304 - Qubik
Esx\0304 - Qubik

Dimensions L. 1.000 x H. 1.000 mm
Dimensions L. 500 x H. 3.000 mm
Dimensions on demand

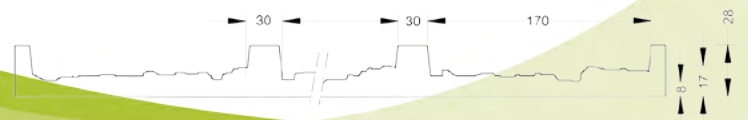


0401 Qubikstone



Str\0401 - Qubikstone
Flx\0401 - Qubikstone
Esx\0401 - Qubikstone

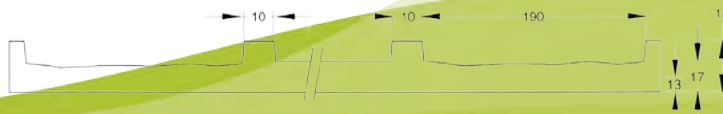
Dimensions L. 1.000 x H. 1.000 mm
Dimensions L. 500 x H. 3.000 mm
Dimensions on demand



0904 Beton



Str\0904 - Beton	Dimensions L. 1.000 x H. 1.000 mm
Flx\0904 - Beton	Dimensions L. 500 x H. 3.000 mm
Esx\0904 - Beton	Dimensions on demand



0208 Vicenza



Str\0208 - Vicenza
Flx\0208 - Vicenza
Esx\0208 - Vicenza

Dimensions L. 1.000 x H. 1.000 mm
Dimensions L. 1.000 x H. 2.000 mm
Dimensions on demand



0919 Stonewood



Str\0919 - Stonewood
Flx\0919 - Stonewood
Esx\0919 - Stonewood

Dimensions L. 1.000 x H. 1.500 mm
Dimensions L. 1.000 x H. 3.000 mm
Dimensions on demand

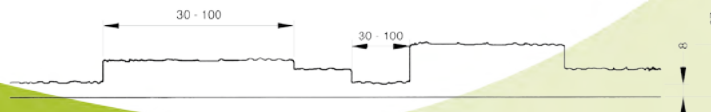


0514 Strips



Str\0514 - Strips
Flx\0514 - Strips
Esx\0514 - Strips

Dimensions L. 1.000 x H. 1.000 mm
Dimensions L. 1.000 x H. 2.000 mm
Dimensions on demand

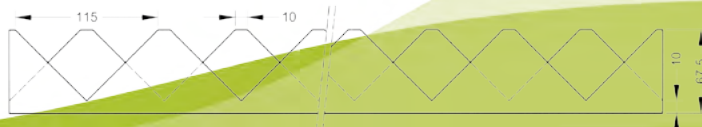


0614 Dromb



Flx\0614 - Dromb

Dimensions L. 1.000 x H. 325 mm

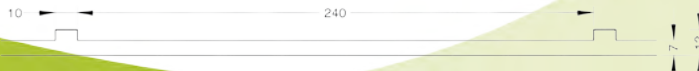


0207 Siena



Str\0207 - Siena
Flx\0207 - Siena
Esx\0207 - Siena

Dimensions L. 1.000 x H. 1.000 mm
Dimensions L. 3.000 x H. 1.000 mm
Dimensions on demand



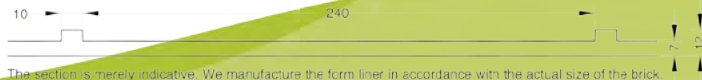
0101 Brik

Brik is a form liner designed for precast use. It acts as a "template" for positioning thin brick facings.



Svm\0101 - Brik
Flx\0101 - Brik
Esx\0101 - Brik

Dimensions L. 1.000 x H. 1.000 mm
Dimensions L. 3.000 x H. 1.000 mm
Dimensions on demand



The section is merely indicative. We manufacture the form liner in accordance with the actual size of the brick.

0141 Mirror

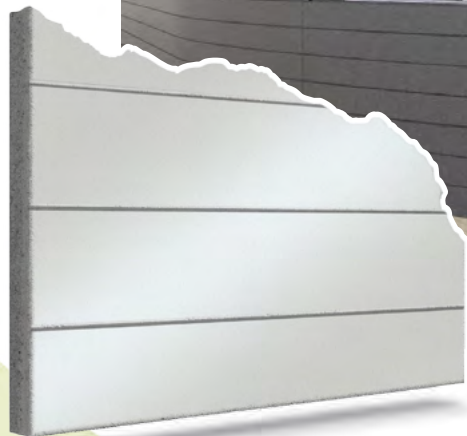


Str\0141 - Mirror
Esx\0141 - Mirror

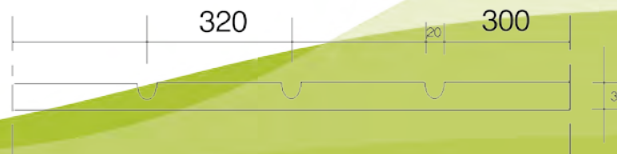
Dimensions L. 2.000 x H. 6.000 mm
Dimensions on demand



0151 Mirror Strips



Esx\0151 - Mirror Strips Dimensions on demand



Flex/Esseflex for columns



Ø and patterns on demand.
Suitable both for metal and plastic formworks.

mano[®]
concrete make up

the only self-bearing form liner

available in **S**tonclear and **f**lex versions

mano[®]

concrete make up

shaped panel for casting



patented[®]



polyurethane

wood

mano by Plasmacem

Created by welding resin-coated polyurethane directly onto the wooden panel for casting, the first and only shaped panel that allows you to obtain aesthetic finishes on concrete.

The panels are supplied in a size of 50 cm wide x cm 100/150/200/250 long. These dimensions make the panels easy to handle and to overlap.



cm 100

Str/0509 Blockstone



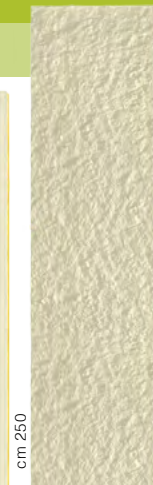
cm 150

Str/0207 Siena



cm 200

Str/0210 Ondulato



cm 250

Str/0302 Prun

The **mano**® panel is supplied in four different finishes..



Str/0302 Prun

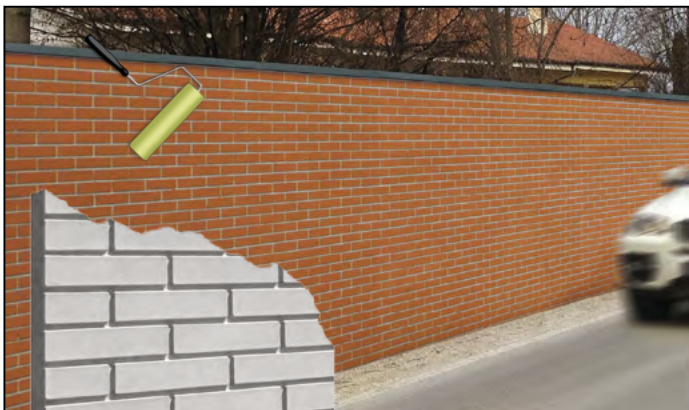


Str/0210 Ondulato



mano® by Plasmacem

This innovative product is both practical and easy to handle, allowing you to considerably reduce reinforcement times since there is no need to worry about attaching the form liner to the panel. As well as allowing for at least 100 reuses, Mano can be regenerated by spreading the polyurethane again on the same wooden board, with significant savings, in keeping with due attention to environmental issues. This makes it very suitable for hire.



Str\0207 Siena



Str\0509 Blockstone

INDICE

pag. 2	Form liners by Plasmacem		pag. 21	Rigatello	cod.1301
pag. 3	Natural looking beautiful concrete		pag. 22	Rollgrip	cod. 0710
pag. 4	Introduction to Esseflex, Flex		pag. 23	Pietraglia	cod. 0405
pag. 5	Introduction to Stonclear, Mano		pag. 24	Adda	cod. 0211
pag. 6	Architectural concrete		pag. 25	Blockstone	cod. 0509
pag. 7	Useful information		pag. 26	Qubik	cod. 0304
pag. 8	Prun	cod. 0302	pag. 27	Qubikstone	cod. 0401
pag. 9	Rough	cod. 0402	pag. 28	Beton	cod. 0710
pag. 10	Graffiato	cod. 0407	pag. 29	Vicenza	cod. 0208
pag. 11	Travertino	cod. 0406	pag. 30	Stonewood	cod. 0919
pag. 12	Floorgrip	cod. 0110	pag. 31	Strips	cod. 0514
pag. 13	Woodline	cod. 0301	pag. 32	Dromb	cod. 0614
pag. 14	Linear	cod. 0403	pag. 33	Siena	cod. 0207
pag. 15	Linear 2	cod. 0404	pag. 34	Brik	cod. 0101 (Svm)
pag. 16	Grecata	cod. 0303	pag. 35	Mirror	cod. 0141
pag. 17	Ondulato	cod. 0210	pag. 36	Mirror Strips	cod. 0151
pag. 18	Cannulato	cod. 0606	pag. 37	Flex for columns	
pag. 19	Rigato	cod. 0209	pag. 38	Mano	
pag. 20	Rigatino	cod. 0209a			

Drawings/patterns created on request.

The maximum dimensions of the form liners and the transversal sections are subject to change.



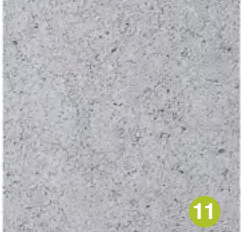
8



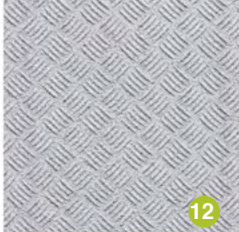
9



10



11



12



13



14



15



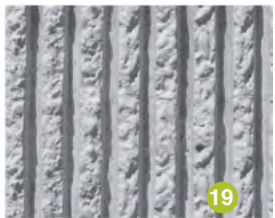
16



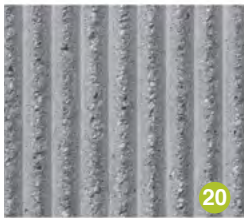
17



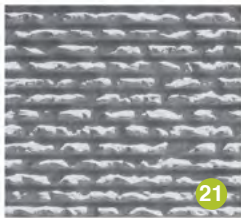
18



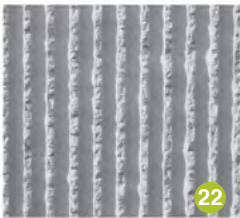
19



20



21



22



23



24



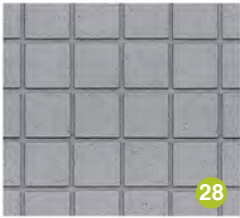
25



26



27



28



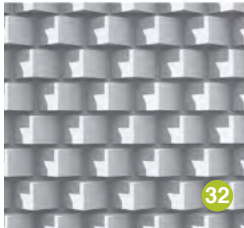
29



30



31



32



33



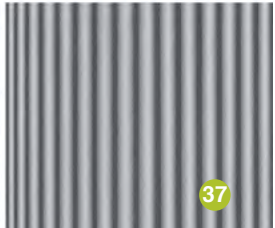
34



35



37



37



PLASMACEM SRL

Via Div. Folgore 36 - 36100 Vicenza (VI) Italy
Tel. +39 0444 546968 Fax +39 0444 1830461
info@plasmacem.com - www.plasmacem.com